

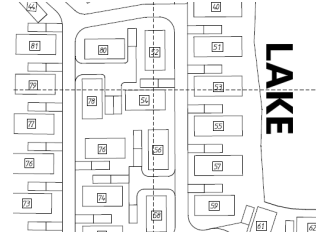
The Reeds development, Barton Broads

Barton Broads



Choice of brand new park homes and plots available on The Reeds development

- * Choice of park home models to suit the plot
- * Choice of plots
- * Gas central heating
- * Double glazing
- * Lounge/diner or Kitchen/diner
- * Furniture available throughout
- * Fully fitted kitchen with integrated appliances
- * Master bedroom with walk-in wardrobe and en-suite
- * Main bathroom includes full size bath
- * Garage with warranty and electric point
- * Parking space
- * Low maintenance plots
- * 10 year park home warranty



For more details please contact the Barton Broads office
01652 660589 or email bartonbroads@btconnect.com

£

NEW

Further details available from:
Pathfinder Village
Tedburn St Mary
EXETER
Devon EX6 6BU

Phone: 01647 270070
Web: www.pathfindervillage.co.uk

Avondale Property (Holdings) Ltd

Registered Office:

Witherley House, Carlyon Road, Atherstone, Warwickshire, CV9 1JE

www.avondaleparkhomes.co.uk



Company No 983091 | VAT No 114 1888 78