

9 Long Woods

Pathfinder Village



This brand new park home, Stately-Albion Tredegar Elite 38' x 20', comes complete with:

- * Double glazing
- * Central heating
- * Hallway with store cupboard
- * Lounge complete with sofa & 2 chairs
- * Dining area including dining table and 4 chairs
- * Fitted kitchen including integrated appliances
- * Bathroom
- * 2 double bedrooms; Master bedroom includes walk-in wardrobe & en-suite
- * Garage & parking space
- * A low maintenance plot
- * 10 year warranty for park home & garage

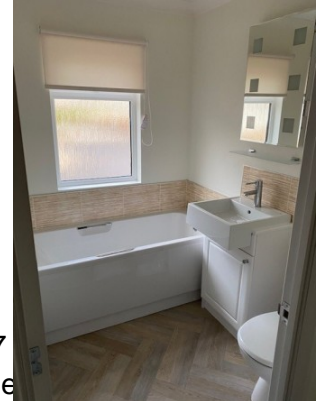
For more details please contact Pathfinder Village Office 01647 270070

£175,000

NEW

Further details available from:
Pathfinder Village
Tedburn St Mary
EXETER
Devon EX6 6BU

Phone: 01647
Web: www.pathfinder



Avondale Property (Holdings) Ltd

Registered Office:

Witherley House, Carlyon Road, Atherstone, Warwickshire, CV9 1JE

www.avondaleparkhomes.co.uk



Company No 983091 | VAT No 114 1888 78