

# 9 Long Woods

## Pathfinder Village



This brand new park home, Stately-Albion Tredegar Elite 38' x 20', comes complete with:

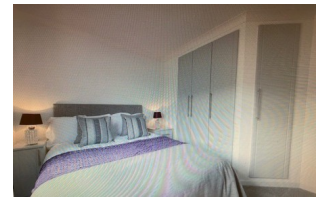


- \* Double glazing
- \* Central heating
- \* Hallway with store cupboard
- \* Lounge complete with sofa & 2 chairs
- \* Dining area including dining table and 4 chairs
- \* Fitted kitchen including integrated appliances
- \* Bathroom
- \* 2 double bedrooms; Master bedroom includes walk-in wardrobe & en-suite
- \* Garage & parking space
- \* A low maintenance plot
- \* 10 year warranty for park home & garage



For more details please contact Pathfinder Village Office 01647 270070

Please note: The pictures are from Stately-Albion's library.



**£175,000**      **NEW**



Further details available from:  
Pathfinder Village  
Tedburn St Mary  
EXETER  
Devon EX6 6BU



Phone: 01647 270070  
Web: [www.pathfindervillage.co.uk](http://www.pathfindervillage.co.uk)

Avondale Property (Holdings) Ltd

Registered Office:

Witherley House, Carlyon Road, Atherstone, Warwickshire, CV9 1JE

[www.avondaleparkhomes.co.uk](http://www.avondaleparkhomes.co.uk)



Company No 983091 | VAT No 114 1888 78