

# AVAILABLE SOON TO SIX ACRE

## *Pathfinder Village*



This brand new park home, Stately-Albion Tredegar Contemporary 40' x 20', comes complete with:

- \* Double glazing
- \* Central heating
- \* Hallway
- \* Lounge complete with sofa, 2 chairs & a coffee table
- \* Dining area including dining table and 4 chairs
- \* Fitted kitchen including integrated appliances
- \* Bathroom
- \* 2 double bedrooms; Master bedroom includes walk-in wardrobe & en-suite
- \* Garage & parking space
- \* A mature plot with surrounding gardens
- \* 10 year warranty

For more details please contact Pathfinder Village Office 01647 270070

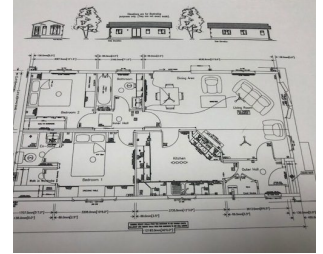
Please note: the photos are library pictures.

# £195,000

## NEW

Further details available from:  
Pathfinder Village  
Tedburn St Mary  
EXETER  
Devon EX6 6BU

Phone: 01647 270070  
Web: [www.pathfindervillage.co.uk](http://www.pathfindervillage.co.uk)



Avondale Property (Holdings) Ltd

Registered Office:

Witherley House, Carlyon Road, Atherstone, Warwickshire, CV9 1JE

[www.avondaleparkhomes.co.uk](http://www.avondaleparkhomes.co.uk)



Company No 983091 | VAT No 114 1888 78