

COMING SOON TO SIX ACRE

Pathfinder Village



This brand new park home, Stately-Albion Tredegar Contemporary 40' x 20', comes complete with:

- * Double glazing
- * Central heating
- * Hallway
- * Lounge complete with sofa, 2 chairs & a coffee table
- * Dining area including dining table and 4 chairs
- * Fitted kitchen including integrated appliances
- * Bathroom
- * 2 double bedrooms; Master bedroom includes walk-in wardrobe & en-suite
- * Garage & parking space
- * A mature plot with surrounding gardens
- * 10 year warranty

For more details please contact Pathfinder Village Office 01647 270070

Please note: the photos are library pictures.

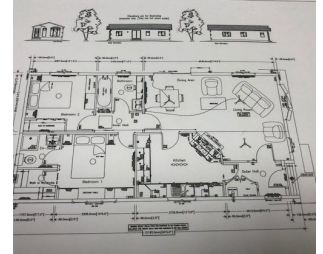
£195,000

NEW

Further details available from:

Pathfinder Village
Tedburn St Mary
EXETER
Devon EX6 6BU

Phone: 01647 270070
Web: www.pathfindervillage.co.uk



Avondale Property (Holdings) Ltd

Registered Office:

Witherley House, Carlyon Road, Atherstone, Warwickshire, CV9 1JE

www.avondaleparkhomes.co.uk



Company No 983091 | VAT No 114 1888 78