

10f Heatherfield *Pathfinder Village*

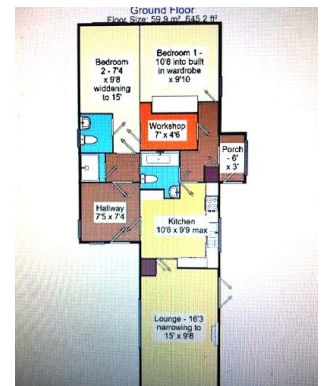


This bungalow style Bluebird Super Guardian 42' x 10' home comprises of:

- * Lounge
- * Study
- * Kitchen
- * Wet room
- * Shower room
- * 3 bedrooms
- * Parking area



To view please contact Your Move Estate Agents 01395 264353
or go to www.rightmove.co.uk or www.zoopla.co.uk



£110,000

PREOWNED

Avondale Property (Holdings) Ltd

Registered Office:

Witherley House, Carlyon Road, Atherstone, Warwickshire, CV9 1JE

www.avondaleparkhomes.co.uk



Company No 983091 | VAT No 114 1888 78