

10 The Crescent

Pathfinder Village



Ready to view: brand new 46' x 20' bungalow style Tingdene Barnwell comes with very high park home specification of:

- * Vaulted ceilings
- * Double glazing
- * Central heating
- * Lounge complete with furniture
- * Dining area including dining table and 4 chairs
- * Fitted kitchen including integrated appliances
- * Bathroom
- * 2 double bedrooms
- * Master bedroom includes walk-in wardrobe & en-suite
- * Garage
- * Good size plot with surrounding gardens
- * 10 year warranty

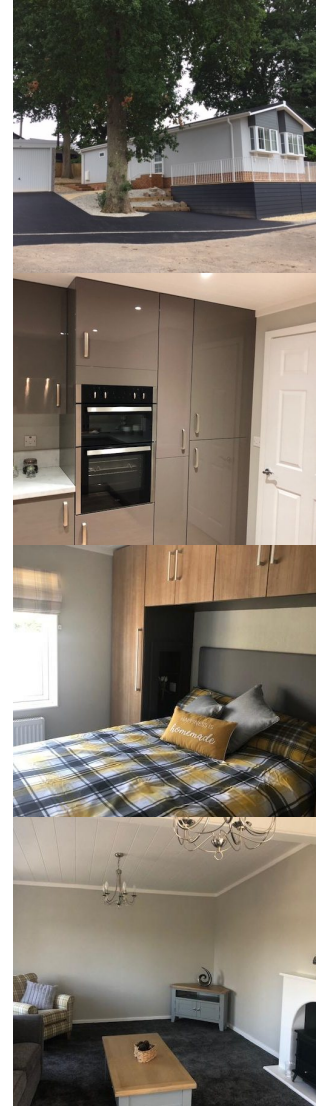
For more details please contact Pathfinder Village Office 01647 270070

£250,000

NEW

Further details available from:
Pathfinder Village
Tedburn St Mary
EXETER
Devon EX6 6BU

Phone: 01647 270070
Web: www.pathfindervillage.co.uk



Avondale Property (Holdings) Ltd

Registered Office:

Witherley House, Carlyon Road, Atherstone, Warwickshire, CV9 1JE

www.avondaleparkhomes.co.uk



Company No 983091 | VAT No 114 1888 78